



Building 22 – 4 room duplex
Apartment no. 45 - Floor no. 12

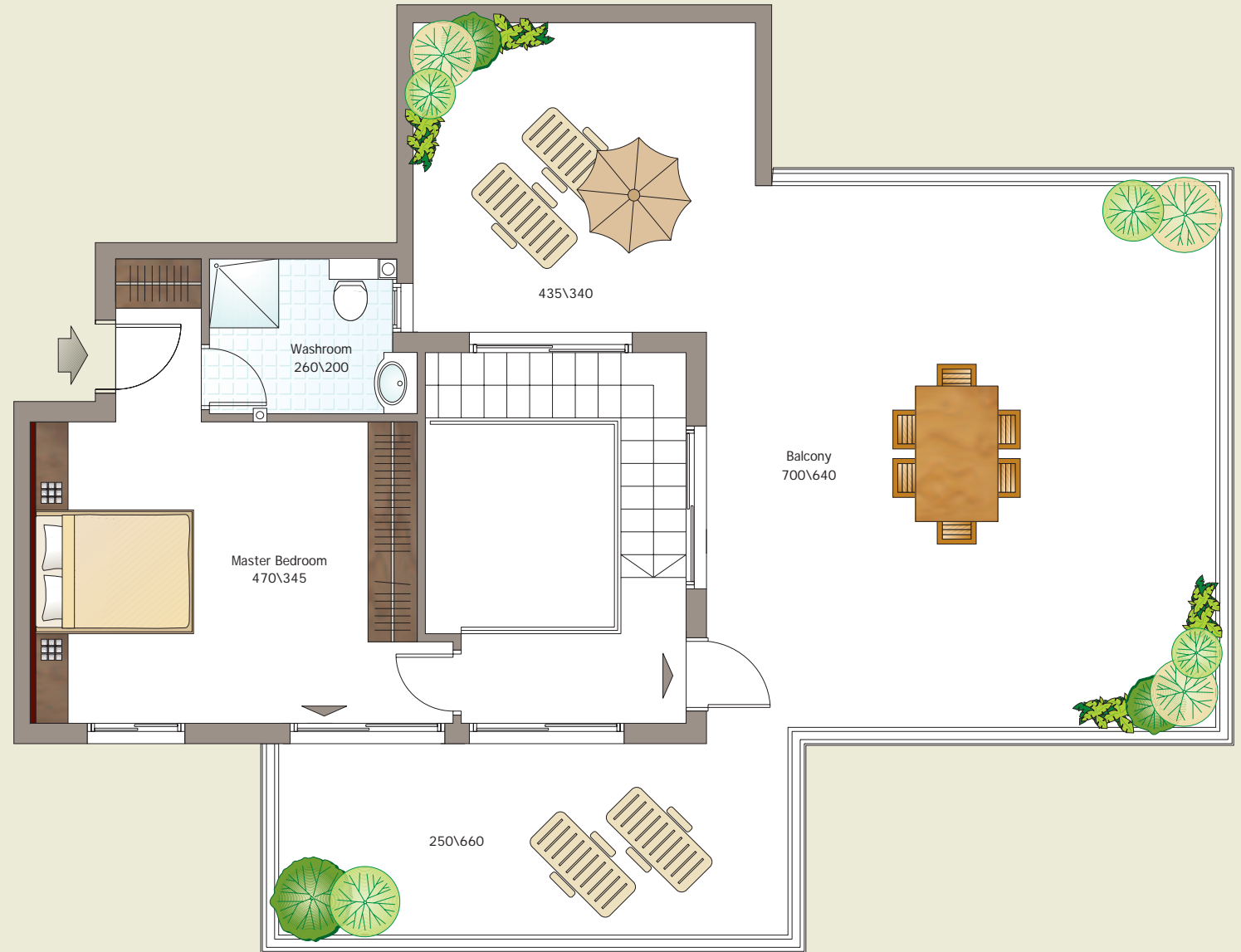
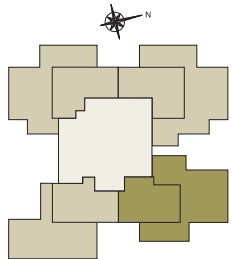


Highlights of general technical specifications:

- External coating: Stone combined with aluminum
- Lobby: Luxurious, including a concierge desk
- Well-equipped gym, including dry and wet sauna, conference room and studio
- Two elevators
- Waste disposal: Building-wide garbage chute
- Two underground parking spots for each apartment
- Storeroom for each apartment.

Highlights of the apartment's technical specifications:

- Stylish steel plated entry door (Pladelet)
- Granite porcelain tiling, 60x60, in living room and kitchen
- Granite porcelain tiling, 40x40, in rooms and hall
- Bathroom appliances: Wall-hang toilet with concealed mechanism, acrylic bathtubs
- Electricity: Preparations for a "smart home", alarm and home cinema
- Central air conditioning for each apartment
- High quality kitchen cabinets
- Built-in bathroom cabinets & washroom cabinet (master bedroom)
- Electrical rolling shutters and preparations for window nets
- High quality interior doors



Everything appearing in this floor plan, including furniture, installations and measurements, is intended exclusively for illustration purposes and shall not bind the companies in any way. The companies will only be bound by the sales floor plan and the technical specifications that are attached to the contract.